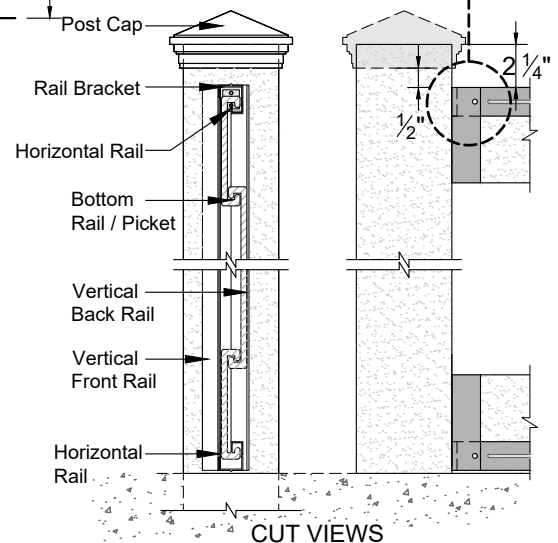
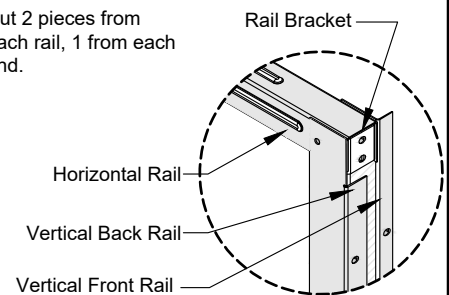


COMPONENT		QTY.	LENGTH
Post Cap	Pyramid Flat Crown	1	N/A
Post	5" x 5"	1	144"
Galv. Steel Post	3.5"x3.5"	1	120"
Horizontal Rail	1 1/2" x 1 1/4" (Horizons)	6	92"
Bottom Rail / Picket	1" x 5 3/4"	27	91"
Vertical Back Rail	3/4"x1 1/2" (Horizons)	3	93"
Vertical Front Rail	5/8"x1 1/2" (Horizons)	3	93"
Horizontal Top Rail Bracket	1 1/4"x1" (Horizons)	6	1"
Pan-Head Screws	#10	112	3/4"

*Cut 2 pieces from each rail, 1 from each end.



NOTES:

1. ALL HORIZONS COMPONENTS ARE MATTE BLACK POWDER COATED GALVANIZED STEEL (COASTAL APPLICATIONS MUST USE STAINLESS STEEL).
2. INSTALLATION TO BE COMPLETED PER MANUFACTURER'S SPECIFICATION.
3. REFER TO TrexFencingFDS.com FOR CONSTRUCTION DETAILS AND PRODUCT INFORMATION.
4. DRAWING NOT TO SCALE.